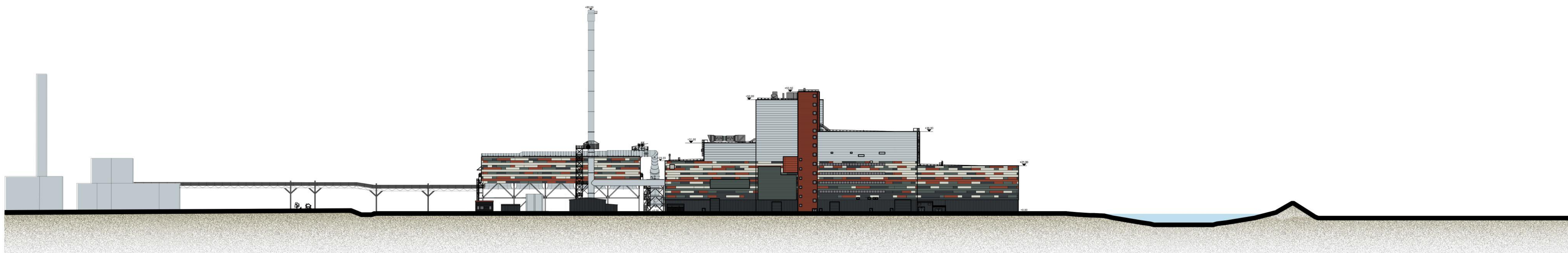


South East Elevation
Scale 1:500



Existing Paper Mill
(with indicative heights)

Proposed Sustainable Energy Plant

Attenuation Pond

Swale Estuary

South East Site Section
Scale 1:1000



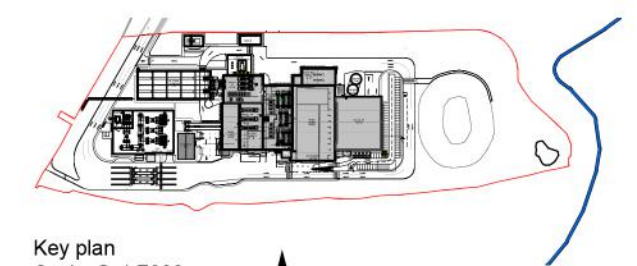
© 2015 RPS Group

notes :

1. If this drawing has been received electronically it is the recipient's responsibility to print the document to the correct scale.
2. All dimensions are in millimetres unless stated otherwise. It is recommended that information is not scaled off this drawing.
3. This drawing should be read in conjunction with all other relevant drawings and specifications.
4. Information based on drawing reference: 15015 F005.

Key:

- A. Horizontally laid Sinusoidal profile insulated built-up cladding with Colorcoat HPS200® Ultra coating - Colour 'Terracotta' (matt finish) / RAL 040 40 40
 - B. Horizontally laid microrib profile insulated cladding panel with Colorcoat HPS200® Ultra coating - Colour 'Albatross' / RAL 240 80 05
 - C. Horizontally laid microrib profile insulated cladding panel with Colorcoat HPS200® Ultra coating, 1000mm deep bands - Colours random mixture 'Terracotta' (matt finish) RAL 040 40 40/ Merin Grey RAL 180 40 05/ Anthracite (matt finish) RAL 7016/ Hamlet RAL 9002
 - D. Vertically laid Trapezoidal profile insulated cladding panel with Colorcoat HPS200® Ultra coating - Colour 'Anthracite' (matt finish) / RAL 7016
 - E. Stack - Colour 'Light Grey' / RAL 7035
 - F. Horizontally laid microrib profile cladding sheet with Colorcoat HPS200® Ultra coating, 100mm deep bands - Colours random mixture 'Terracotta' (matt finish) RAL 040 40 40/ Merin Grey RAL 180 40 05/ Anthracite (matt finish) RAL 7016/ Hamlet RAL 9002
 - G. Horizontally laid microrib profile insulated cladding panel with Colorcoat HPS200® Ultra coating - Colour 'Terracotta' (matt finish) / RAL 180 40 05
 - H. Aluminium Louvres to be PPC colour Merin Grey RAL 180 40 05 / Anthracite (matt finish) RAL 7016
- Polyester powder coated aluminium window frames - Colour 'Anthracite' (matt finish) / RAL 7016
- Metal external handrails and plant support - Galvanised finish.
- Paladin fencing and gates - Colour 'Anthracite' (matt finish) / RAL 7016



Key plan
Scale @ 1:7000

Drawing for **PLANNING** purposes only

U	Site plan updated, CEMS platform and staircase updated.	BC	TFH	11.09.18
T	Drawing revised to show MSE equipment and new attenuation pond layout.	PBR	TFH	04.07.18
S	Escape stair updated to be non enclosed stair. ACC cladding amended	JT	CMGD	21.02.17
R	Client logos updated. Steam export rack updated as per CNIM drawing. Key updated. Raw Water Tank added. Walkway enclosure added. Escape stairs added.	JT	CMGD	13.02.17
P	Text added	JH	CD	19.01.17
N	Site Elevations and sections updated to suit 2016 NMA Site Plan Layout	DDP	CD	03.01.17
M	Updated to suit current site layout received from EPC contractor	MK	JAT	17.11.15
L	Updated as per client comments 26.10.15.	MK	JAT	28.10.15
K	Updated to suit current building layout received from EPC contractor	DEC	JAT	20.10.15
J	Logo's updated	LMA	ST	02.08.13
H	Elevations updated. Logo's updated.	AJL	RS	10.07.13
G	Elevation information, title block and key updated	JAT	SG	08.10.12
F	Logo confirmed	PRP	AJL	03.03.10
E	E.ON logo added.	KRY	PRP	15.02.10
D	Stack colour reference amended. Crane area material changed to concrete.	AJL	PRP	18.01.10
C	Key and notes updated and minor amendments to drawing.	SMG	PRP	16.12.09
B	Building levels information clarified. Keyplan Updated. Stack height confirmed.	AJL	PRP	25.11.09
A	Key added. Keyplan updated. Building elements labelled.	AJL	PRP	19.11.09

rev	amendments	by	chkd	date
-----	------------	----	------	------

RPS

Sherwood House
Sherwood Avenue
Newark, Nottinghamshire
NG24 1QQ

T +44 (0) 1636 605 700
F +44 (0) 1636 610 696
W www.rpsgroup.com
E rpsnewark@rpsgroup.com

Client

Wheelabrator
TECHNOLOGIES

Project

Kemsley Sustainable
Energy Plant

Title

South East Elevation

Drawing Status	Date Created	Drawing Scale
Preliminary	11.11.09	1:500
Project Leader	Drawn By	Initial Review
AWY	SMG	RS

Drawing Number
16315 / A1 / P / 0110 U

FIGURE 4.4D